

Synergy Investments

Newsletter

INVESTMENT REPORT
FOR QUARTER ENDING 30 SEPTEMBER 2022



Market Commentary



The global economy has been buffeted by multiple challenges in 2022 and it is fast shaping as a year not many will remember fondly. During the drawn-out lockdowns and upheaval that accompanied the peaks of Covid-19, the world collectively pined for a seamless post-Covid recovery. The reality, however, has been rather bumpy.

Amidst a backdrop of sharply increasing inflation, tight labour markets, rapidly rising interest rates, and ongoing uncertainties surrounding both the war in Ukraine and the lingering pandemic, the global economy has stutter-stepped its way through 2022.

Although international food and energy prices may have eased from recent peaks, broad price increases have eroded real incomes, triggering a global cost of living crisis.

Good news is seemingly in short supply at present and these highly publicised challenges have all contributed to persistent headwinds for investment markets. However, the unforgettable lesson from all previous market corrections is that periods of weakness can often provide the best opportunities for long term investors.

Ripple effects

Even before Russian President Vladimir Putin ordered the invasion of Ukraine, the global economy was under pressure with inflation higher than markets were anticipating. The initial recovery from the

pandemic recession was stronger than expected and the demand surge quickly overwhelmed factories, ports and freight yards, causing shortages, delays and pushing up prices.

In response, central banks began raising interest rates to cool economic growth and contain spiking prices. Unfortunately, it became more difficult for them to safely 'steer the ship'. If they leant too far towards supporting economic recovery and growth, they faced a bigger fight to control mounting inflation. But if they focused too rigidly on dampening down price increases, they pushed economies much closer to possible recession. It's an economic highwire act with a hefty consequence attached to any misstep.

Adding to the complexity, when Russia invaded Ukraine on 24 February the West responded with heavy economic sanctions which further disrupted trade in the critical areas of food and energy. Russia is the world's third biggest petroleum producer and a leading exporter of natural gas, fertiliser and wheat, while farms in Ukraine feed millions globally.

The inflationary impacts resulting from this disruption have rippled out to the world.

Inflationary indicators easing

The fight against inflation is being waged globally. And, while it is too early to declare victory, economic data continues to point to inflation having peaked which, all things being equal, should begin to be reflected in lower average inflation readings in the future.

The general slowdown in global demand has taken pressure off commodity prices and allowed supply chains to partly normalise. Oil prices continued to recede in the recent quarter, providing some welcome relief to consumers at the petrol pump. Ending September at around US\$80 per barrel, the international oil price has fallen by US\$40 from its early June peak of US\$120 per barrel, a 33% decline.

This is one of many indicators, along with improving delivery times, prices and inventory levels that indicate the global supply chain pressures, while still elevated, are easing.

Interest rates

Fixed interest markets continue to be highly focused on inflation, monetary policy signals from central banks and the state of the economy.

Considerations about the economy are largely centred on two competing themes:

1. supply-based constraints leading to higher labour and goods prices
2. forward-looking concerns about potential recession risks

In New Zealand, escalating recession fears in July, linked to the idea of potentially fewer interest rate hikes, drove New Zealand 10 year government bond yields down to their lowest levels since April. By late August, however, the focus had shifted almost entirely to the policy comments made by central banks. In synchronicity with other major central banks, the Reserve Bank of New Zealand (RBNZ) reaffirmed its absolute focus on getting inflation back down towards its target range, resulting in the New Zealand 10 year government bond yield moving back to its June highs. It was a remarkably similar story in the much larger US bond market, and elsewhere.

Farewell to Queen Elizabeth II

The UK hit the headlines for a very different reason during the quarter - on 8 September the world was met with the sad news that Queen Elizabeth II, the UK's longest-serving monarch, had died at Balmoral aged 96, after reigning for 70 years.

The Queen ascended to the throne in 1952 and witnessed enormous social change during her reign. She also worked with 15 different prime ministers, from Winston Churchill in 1952, to Liz Truss who took office on 6 September, just two days before Queen Elizabeth's death. maintain the risk exposure that you set, and considered appropriate, when the skies were clearer. Investing more when prices are cheaper is usually an even better option, but that may not be an option that is available to everybody. If it isn't, just batten down the hatches and wait this one out. The skies always clear and the markets always recover. We just don't ever quite know the timing.



What next?

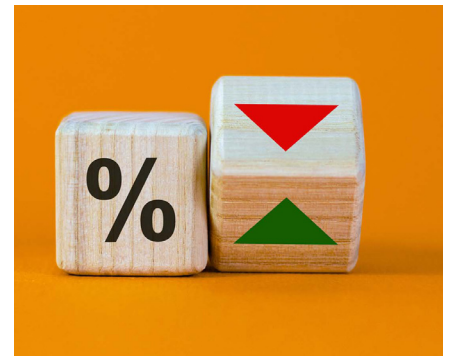
Quite apart from the ever-present challenge of living in a world that is still managing the ongoing impacts of the pandemic, grappling with a significant geopolitical conflict, and enduring a cost-of-living crisis, long term investors have also had their patience tested by these events.

Portfolio valuations have been volatile in 2022, reflecting the uncertainties surrounding these complex real world issues. Share markets have been buffeted as investor confidence has waned, and bond markets have suffered due to rapidly changing interest rate expectations.

Although it is hard to point to much obvious good news at present, one source of comfort should be that investor sentiment is currently very negative. That may sound counterintuitive, but when investor sentiment is strongly negative it means the markets have very likely factored in (and priced in) all of the existing bad news.

That's why investors at the end of September could buy a 10 year New Zealand Government bond yielding 4.3%, when at the start of the year it was yielding just 2.4%. It's also why the price-to-earnings ratio of the globally significant S&P 500 Index in the USA was at 19.8, down from 26.3 at the start of the year and 37.3 at the end of 2020. In the investment world, unlike in our supermarkets, almost everything is now cheaper.

In many ways, the investment discounts available today versus what investors were paying only a matter of months ago should be enough to see buyers queuing around the street. For the moment, the queues are relatively short.



But as greater clarity gradually emerges about global inflation, interest rates and economic growth rates, the prices available in financial markets today might very well look highly appealing. And one thing we do know is that forward-looking markets always have the capacity to respond (and respond quickly) to the prospect of better times ahead.

While investor patience has been tested this year, it is always important to remind ourselves that:

- **investment returns often come in spurts** - making it important that we stick to our long term strategy
- **markets are volatile** - meaning they can go down as well as up, so down periods should always be expected
- **critical to achieving sound long term investment outcomes is good 'investor behaviour'** - which means holding on to quality assets that have become temporarily cheaper, rather than being tempted to sell at a discount

As always, we don't profess to know how or when the most significant events in the world today will be resolved. However, we do expect that central bank actions to contain inflation will eventually achieve that aim. We also expect that interest rates will eventually stop their ascent and reflect a new post-Covid equilibrium. We even expect the current conflict in Ukraine to reach a conclusion.

In the meantime, in spite of prevailing uncertainties, we expect global capitalism to continue to find ways to survive and thrive and for long term investors to continue to benefit from a consistent exposure to those endeavours over time.

Key Market Movements

Volatility remained high through the third quarter of 2022 as markets priced in changing expectations on the economic impact of rapidly rising interest rates, European energy uncertainty increased, and the effects of COVID-19 continued to linger. The quarter was a story of two halves - July and August delivered some initial relief and strong returns for battered investors in both share and bond markets, and then September reversed course, wiping out the majority of the earlier gains.

INTERNATIONAL SHARES

-5.1%
(hedged
to NZD)

The quarter began with a share market rally, as hopes of a pivot on interest rate reductions in 2023 helped raise growth prospects. These hopes were dashed following a summit of central bankers, who reaffirmed their commitment to fighting inflation through higher interest rates, which took place during the quarter.

-4.7%
(unhedged)

The S&P 500 Index lost -4.9% for the quarter in USD terms after being up +9.2% at the end of July. Consumer discretionary was the strongest sector, led by Amazon which reported solid mid-year revenue growth and a rosy projection for the third quarter. The energy sector was also a strong performer with Exxon Mobil and Chevron Corporation advancing, despite the oil price having declined from its June peak.

Across the Atlantic, European shares were down with inflationary concerns - in particular, increasing energy costs - weighing on the economy. Nord Stream 1, the main gas pipeline between Russia and Europe was 'closed for maintenance' for long periods, and leaks to the Nord Stream 2 under the Baltic Sea have raised concerns of energy shortages this European winter. Natural gas prices remain heightened, trading as much as three times the 2022 opening price. The European and British central banks raised interest rates through the quarter and the euro tumbled to a 20 year low against the US dollar. All of this contributed to losses and the S&P Europe 350 index declined -4.0% in local currency terms.

A weak New Zealand dollar and a very strong US dollar moved the USD/NZD rate by over 10% (from 0.624 to 0.559). While this now makes holidays to Hawaii more expensive for Kiwis, it also means significant foreign exchange gains for local investors holding unhedged securities. This sort of price action often occurs during times of market stress.

In New Zealand dollar terms, the MSCI World ex-Australia Index delivered a return of -5.1% for the quarter on a hedged basis, and +4.7% unhedged. This meant the rolling 12 month return for the New Zealand dollar hedged index reduced to -17.1%, while the unhedged index is down -1.0%.

Source: MSCI World ex-Australia Index (net div.)

EMERGING MARKETS SHARES

-1.1%

Against the backdrop of slowing global growth, heightened inflationary pressure and rising interest rates, emerging market equities posted negative returns in the third quarter.

China underperformed by a significant margin, which dragged the overall index down. A slump in the Chinese property market weighed on investor sentiment, and the imposition of Covid-related lockdowns in various major cities negatively impacted domestic demand. Growth-sensitive north Asian markets, such as South Korea and Taiwan, also declined as the outlook for global trade deteriorated.

Poland and the Czech Republic were also among the biggest decliners, as the Russian war in Ukraine escalated and led to an energy crisis in Europe, which in turn has contributed to accelerating inflation across Europe.

India and Indonesia posted positive returns which were well ahead of the broader index, and Brazil also performed well as Brazilian growth and inflation data both improved.

The MSCI Emerging Markets Index produced a quarterly return of -1.1% in unhedged New Zealand dollar terms and has returned -10.9% over the trailing 12 months.

Source: MSCI Emerging Markets Index (gross div.)

NEW ZEALAND SHARES

+2.2%

The New Zealand market was able to hold on to early gains through the quarter with the S&P/NZX 50 Index posting a welcome gain of +2.2%. The quarter again delivered a high level of dispersion, with individual company returns ranging from -30% to +25%.

Electricity 'gentailers' (generators/retailers) enjoyed a strong quarter with almost all of the big players advancing. Our largest company, Meridian, delivered a solid gain of +5%, while infrastructure investment company Infratil returned a healthy +12.6% with news of its stake in a US renewable energy company having tripled in value.

Second largest index constituent, Fisher & Paykel Healthcare, declined -7.4% after the company advised its profits would fall sharply from the same year-ago period, when demand was extraordinarily high due to the Covid-19 pandemic.

Other larger firms, Air New Zealand (+25%) and a2 Milk (+24%), saw their share prices surge for contrasting reasons. The airline reversed losses from earlier in the year as sales continued to pick up, thanks to border re-openings and the continued relaxation of the Covid-19 restrictions. Stronger than expected revenue results and a share buyback announcement boosted a2's returns, rewarding company investors who have endured a challenging few years.

Fast food retailer Restaurant Brands NZ Ltd (owner operator of KFC, Pizza Hut, Carl's Jr. and Taco Bell in New Zealand) was the biggest loser over the quarter. The share price fell -29% as rising food costs resulted in declining profits and the group announced the retirements of their CEO and CFO.

Source: S&P/NZX 50 Index (gross with imputation credits)

AUSTRALIAN SHARES

+3.8%

The Australian share market (ASX 200 Total Return Index) was robust through the quarter delivering +0.4% in local currency terms. Returns to unhedged New Zealand investors were better, at +3.8%, due to the relative strength of the Australian dollar.

The fate of the Australian market is largely tied to the performance of their banking and mining companies, and both were, in aggregate, positive over the quarter. The 'big four' lenders (CBA, NAB, Westpac and ANZ) were especially robust, with their revenue expectations benefiting from higher interest rates. Materials giants Rio, BHP, Fortescue and South32 declined on the back of weakening global growth expectations, while smaller players, especially those involved in lithium, cobalt and other clean energy metals (e.g. Pilbara Minerals Ltd: +99%, Mineral Resources Limited: +38%) thrived.

Large biotech firm CSL led the healthcare sector up, while energy producers such as Woodside benefitted from increased demand for their oil and gas as opposed to supplies from Russia. Real estate struggled, with increased borrowing costs and uncertainty about future tenant viability weighing on the sector.

Source: S&P/ASX 200 Index (total return)

Key Market Movements

INTERNATIONAL FIXED INTEREST

-1.9%

Fixed income markets began the quarter pricing in the possibility of interest rate reductions ahead, given concerns the initial rate hikes might cool the economy too quickly. This generally pushed yields down and delivered gains for fixed income investors. However, hopes of a loosening of policy (i.e. lower interest rates) were dashed following the Jackson Hole Economic Symposium in late August and subsequent announcements from the US Federal Reserve, in particular, reaffirming their dedication to fighting inflation.

The 'Fed' raised US rates twice to 3.25%, a long way from the 0.25% setting in March this year. The US 10 year bond yield rose from 3.02% to 3.83% over the quarter, spending some time briefly above 4%, a level not seen since 2010. Shorter duration bonds saw even higher increases as the prospect of higher rates for longer were priced in; the US two year bond yield closing the month at 4.27% after commencing at 2.96%. With two year yields ending the quarter higher than 10 year yields, this 'inverted' yield curve is a clear signal that investors remain wary about the future strength of the US economy.

The European Central Bank (ECB) faces an even more complex task, with its policy decisions affecting many nations with varying economic stability. This is compounded by the energy crisis unfolding as a result of the Russian invasion of Ukraine and Euro area inflation reaching a record high 10% p.a. The ECB increased interest rates twice, from 0% to 1.25%.

In the UK, the Bank of England (BoE) continued its tightening cycle with two further 50bps interest rate hikes, bringing the total to seven in the current cycle. The late quarter 'mini-budget' announcement by the new UK Chancellor was very poorly received and sparked a sharp selloff in UK government bonds (gilts) as the market priced in expectations of increased borrowing to finance these policies. The gilt market volatility spiked, and the BoE was forced to provide emergency liquidity to protect bondholders, in particular, large pension funds. With the market remaining highly critical of the UK's ability to finance these policies, the British pound weakened significantly.

In this increasing yield environment, fixed income securities were negative across the board, with longer duration bonds generally delivering worse returns. Corporate bonds also suffered, and generally underperformed government bonds as credit spreads continued to widen, especially in September.

The FTSE World Government Bond Index 1-5 Years (hedged to NZD) returned -1.9% for the quarter and is -5.4% over the trailing 12 months. The broader Bloomberg Global Aggregate Bond Index (hedged to NZD) returned -3.7% in the quarter and is -12.3% for the last 12 months.

Source: FTSE World Government Bond Index 1-5 Years (hedged to NZD)

NEW ZEALAND FIXED INTEREST

-1.1%

The Reserve Bank of New Zealand (RBNZ) continued with its monetary tightening cycle, increasing the Official Cash Rate (OCR) twice in the quarter taking this benchmark rate to 3.00%.

In their accompanying statement, the RBNZ noted that "Global consumer price inflation has continued to rise, albeit with some recent reprieve from lower global oil prices... The outlook for global growth continues to weaken, reflecting the ongoing tightening in global monetary conditions."

The statement also noted that monetary conditions needed to continue to tighten until the Monetary Policy Committee is confident there is sufficient restraint on spending to bring inflation back within its 1% - 3% per annum target range.

With New Zealand inflation at 7.3% year on year in July (next announcement due 18 October), and the August unemployment rate at a very low 3.3%, this continued tightening policy is consistent with the bank's dual mandate to maintain price stability and contribute to maximum sustainable employment.

Similar to the effects seen overseas, rising bond yields generally resulted in negative short term returns for bonds of all durations, with longer term and lower quality bonds declining more.

The S&P/NZX A-Grade Corporate Bond Index fell -1.1% for the quarter, while the longer duration but higher quality S&P/NZX NZ Government Bond Index fell -1.9%.

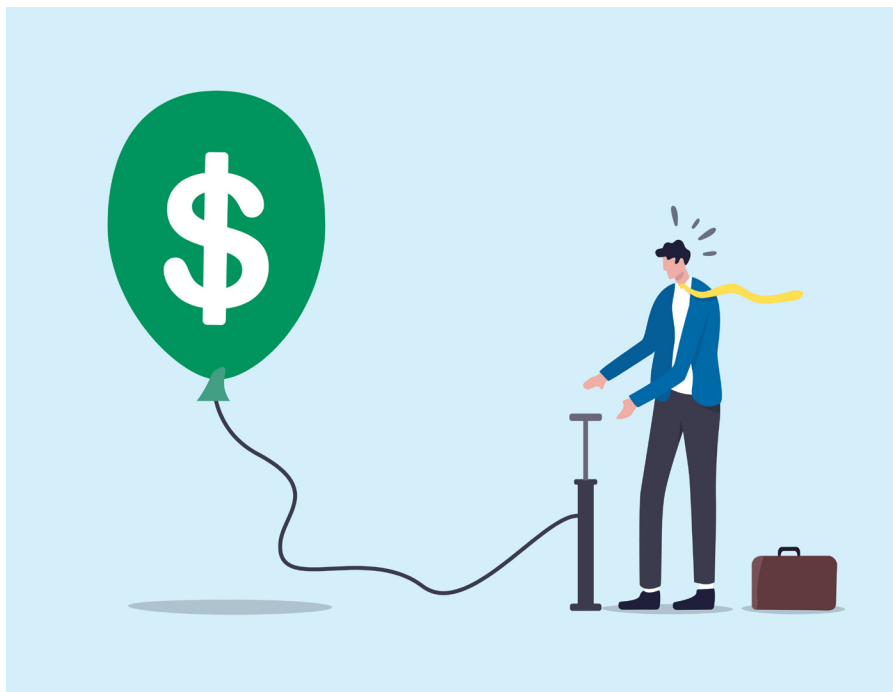
Source: S&P/NZX A-Grade Corporate Bond Index

Table 1: Asset class returns to 30 September 2022

ASSET CLASS	INDEX NAME	3 MONTHS	1 YEAR	3 YEARS	5 YEARS	10 YEARS
New Zealand shares	S&P/NZX 50 Index (gross with imputation credits)	+2.2%	-16.0%	+1.1%	+7.8%	+12.4%
Australian shares	S&P/ASX 200 Index (total return)	+3.8%	+0.8%	+4.7%	+7.9%	+7.4%
International shares	MSCI World ex Australia Index (net div, hedged to NZD)	-5.1%	-17.1%	+4.5%	+5.7%	+10.3%
	MSCI World ex Australia Index (net div.)	+4.7%	-1.0%	+8.6%	+10.9%	+12.6%
Emerging markets shares	MSCI Emerging Markets Index (gross div.)	-1.1%	-10.9%	+2.0%	+3.7%	+5.5%
New Zealand fixed interest	S&P/NZX A-Grade Corporate Bond Index	-1.1%	-6.6%	-1.9%	+1.2%	+3.1%
International fixed interest	FTSE World Government Bond Index 1-5 Years (hedged to NZD)	-1.9%	-5.4%	-0.9%	+0.5%	+2.1%
New Zealand cash	New Zealand One-Month Bank Bill Yields Index	+0.8%	+1.7%	+0.9%	+1.2%	+2.0%

Unless otherwise specified, all returns are expressed in NZD. We assume Australian shares and emerging markets shares are invested on an unhedged basis, and therefore returns from these asset classes are susceptible to movement in the value of the NZD. Index returns are before all costs and tax. Returns are annualised for time periods greater than one year.

Understanding the dangers of inflation



Former US president Ronald Reagan called inflation “as deadly as a hit man”. And, for any investor, it’s arguably the biggest enemy you face. Part of what makes it so dangerous is that mostly you don’t notice it. Even though experience tells you that \$100 today will buy you less than it did ten years ago, the erosion is normally so gradual that you don’t feel it happening.

With inflation at such high levels at the moment, however, things are different. Rising prices are having a very real impact in a short space of time. Energy and food costs are obviously going up and putting pressure on household budgets.

This is not how inflation usually works, but it is a reminder of how pernicious it can be.

Consider that, according to Stats NZ, a basket of goods that cost \$100 last year would have cost just \$51 in 1990. In 1970, you would have needed \$6 to buy the same things.

Growing your money

That is how powerful the impact of inflation is, and why every long term investor needs to see it as the most important risk they face. To grow your wealth over time, you have to be getting a return that is higher than inflation.

Because otherwise, in reality, you are getting poorer.

If you are saving for your future, this is critical. Even if the amount of money you have is going up year by year, your ‘real return’ is that return, minus the rate of inflation.

For example, if you earned a return of 8%, but inflation is 6%, only 2% is ‘real’ growth. Inflation has eaten away the rest.

And if inflation is at 6% and you only earn a return of 4%, your ‘real return’ is -2%. You are actually poorer, because inflation has eroded all of your gains, and a bit extra.

Finding returns

What is really important for investors to appreciate is that in order to earn those inflation-beating returns, you do need to take a certain amount of risk. A perfectly safe five year fixed deposit at a bank is currently giving you around 4.4%. That is a higher rate than savers have been able to get for years, but it is way below the latest official inflation number of 7.3%.

For an investment that will earn inflation-beating returns over the long run, you need to be invested in things like shares and property. These will move up and down from month to month and even year to year, but over decades they are the only way to ensure that you consistently grow your wealth.

This does require investors to be patient. In some years, returns from the stock market will be below inflation. Sometimes, they may even be negative.

But a diversified portfolio of shares will also have very good years, way ahead of inflation. That means that, on average, you will be able to grow your wealth over the long term.

Keeping a long term mindset

But it’s not only investors who are saving for the future that need to think about inflation. Anyone who is using what they have saved to draw an income has to consider it as well. In fact, if you are in this situation, you now have to deal with inflation on two fronts.

The first is that your pot of money still has to keep growing to sustain you into the future. That means that you still need to keep a long term mindset.

Understanding the dangers of inflation

Many people who are no longer working make the mistake of thinking that they can't take any risk with their money. They only want to use 'safe' investments like fixed deposits.

These 'safe' investments are, however, very risky for a long term investor. That is because the returns they generate almost never keep up with inflation, which means that they erode over time. Someone who still needs to maintain their wealth for another 20 or 30 years can't afford to let inflation eat away at their savings.

Many people who are no longer working make the mistake of thinking that they can't take any risk with their money.

Growing your income

The second consideration for someone drawing an income from their savings pot is to make sure that what they are getting goes up every year. To maintain your standard of living, it must increase at least by the rate of inflation.

For example, if you are comfortable with a monthly income of \$6,000 today, and inflation is at 7%, you will need \$6,420 per month next year to afford the same things. If inflation moderates to 3% over the next 10 years, you will need \$8,060 every month in a decade's time.

If you don't get any increase, the value of your \$6,000 will decline. If inflation averages 3% for a decade, it will only buy you the equivalent of less than \$4,500 would today.

This is why the inflation rate should be what everyone measures their investment performance against.

The return on the stock exchange or how much an individual fund or category of funds goes up doesn't actually affect anybody directly.

What does impact everybody is inflation. Those who don't beat it, will be getting poorer. And that is why it really, really matters to every investor, and is the most important measure of whether you are getting the returns you need.

Source: <https://www.evidenceinvestor.com/understanding-risk-part-one-inflation/>

Disclaimer

Information contained in this newsletter does not constitute personalised financial advice because it does not take into account your individual circumstances or objectives. You should carefully consider whether the Synergy investment portfolios are appropriate for you, read the applicable offer documentation, and seek appropriate professional advice before making any investment decision.

The information in this newsletter is of a general nature only. Investors should be aware that the future performance of the Synergy investment portfolios may differ from historic performance. Details are correct as at the date of preparation and are subject to change. The investment objectives and strategies of the Synergy investment portfolios may change in the future.

While every care has been taken in its preparation, Consilium NZ Limited ('Consilium') makes no representation or warranty as to the accuracy or completeness of the information in this newsletter and does not accept any liability for reliance on it.

The capital value, performance, principal, and returns of the Synergy investment portfolios are not guaranteed or secured in any way by Consilium, or any other person. Investments in the Synergy investment portfolios do not represent deposits or other liabilities of Consilium and are subject to investment risk, including possible loss of income and principal invested.



info@synergyinvestments.co.nz
www.synergyinvestments.co.nz
0800 4 synergy

209 Cambridge Terrace
PO Box 1106
Christchurch 8140